

Elementary School INFORMATION

New Family
Night

2024-2025

Partnership

Our Mission is to partner with families by providing a biblically-based, college-preparatory education so that students will be equipped to serve Christ and influence the world.

Partnership means we are running the same race with the same goal in mind.



Matthew 18

We do not claim to be a perfect place, as we are made up of imperfect people.

As issues arise, we do take Matthew 18 into consideration.

Communication



Weekly All School News

"This Week at
Wesleyan"

Monthly Elementary Newsletter

"The Elementary
Express"



Classroom Newsletter

Weekly communication from
your child's teacher

Social Media Posts

Wesleyan Christian
Academy

Dress Code



Tennis Shoes

Tennis shoes are required for PE days and encouraged for everyday wear



Leggings

Longer shirts or dresses should be worn with leggings



Shirts



Shirts must cover the midriff and not include objectionable slogans. Thin tank tops and racerback tops are not permitted.

Shorts



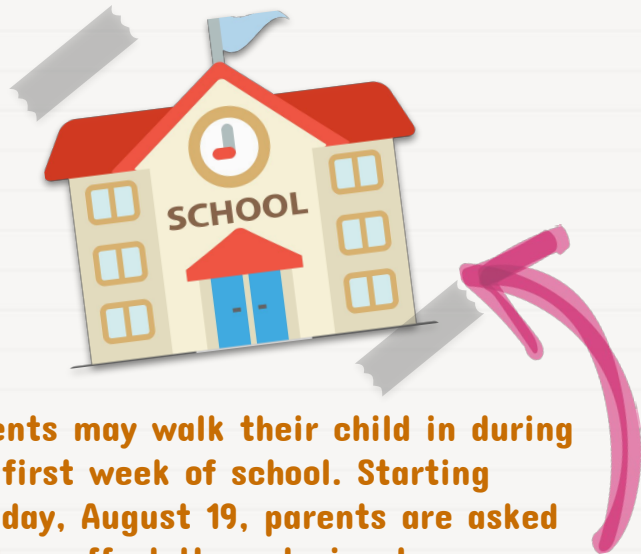
Shorts without holes and of modest length are required

Skirts / Dresses



Please add a pair of shorts under skirts and dresses

Arrival



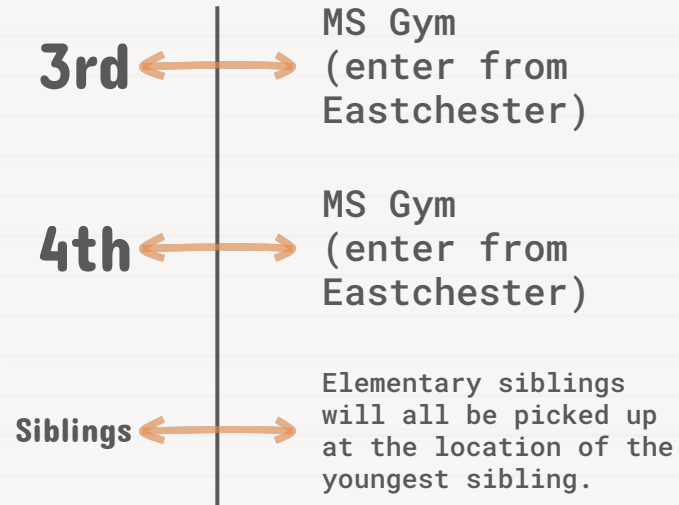
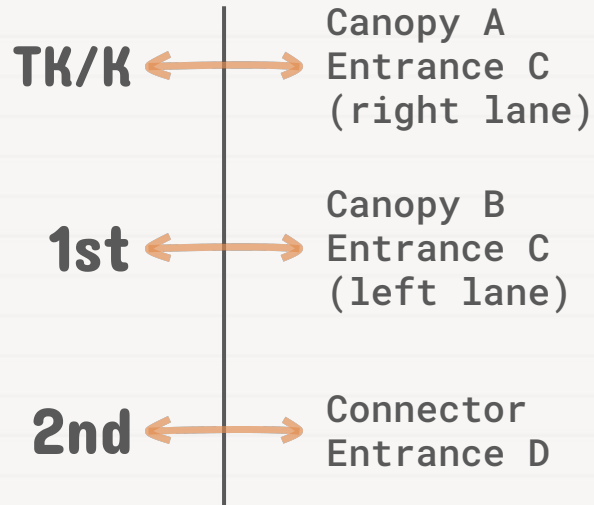
Parents may walk their child in during the first week of school. Starting Monday, August 19, parents are asked to drop off at the exterior doors or use the car line.

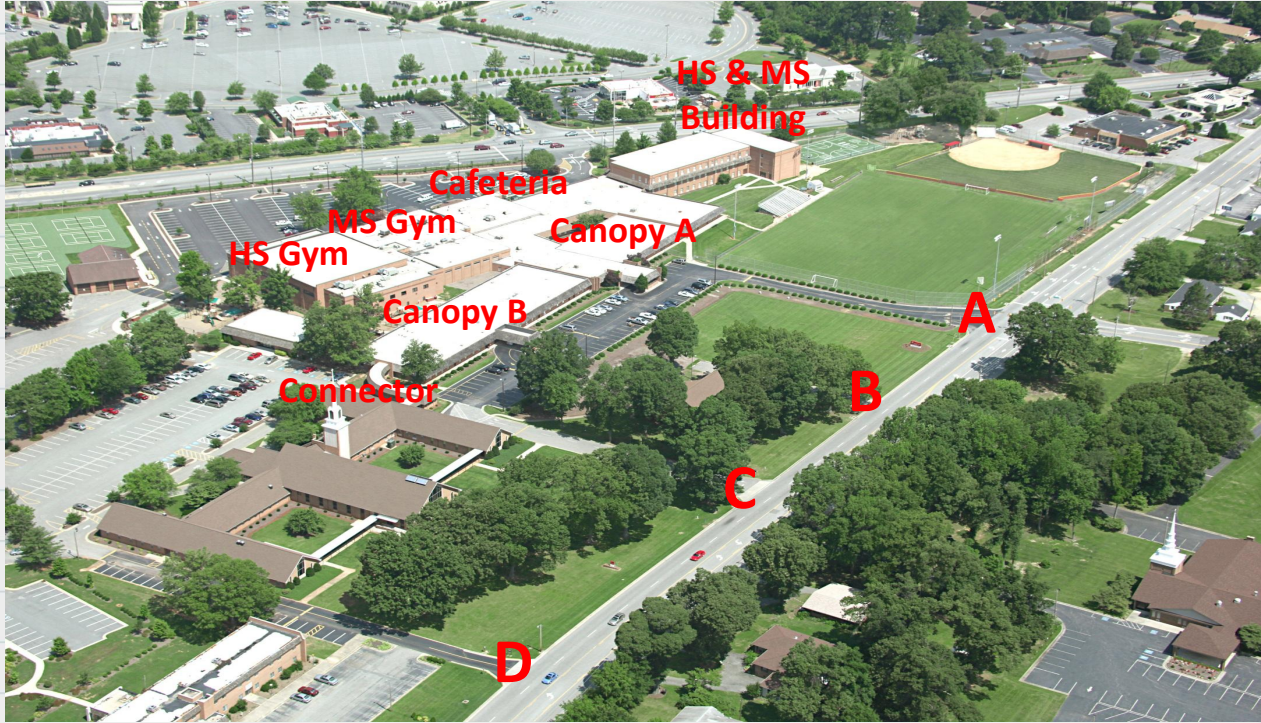
- **7:00-7:55**
Elementary Students are held in the cafeteria (1st - 4th) or music room (TK & K) when they arrive early.
 - Students who arrive before 7:40 will have the option to eat a light breakfast (provided or purchased).
- **7:45-8:10**
Elementary carline is available (one way traffic in Centennial St. side parking lot)
- **7:55**
Elementary Classrooms open
- **8:10**
Tardy Bell Rings

Dismissal

Regular Day - 2:30

Half Day - 11:00





Campus Map

After School Program

Ashton Farlow
agfarlow@wcatrojans.org



Enrollment Options

One Hour

2:30 - 3:30

Pick up from the cafeteria

Extended Day

2:30 - 5:30

Pick up from designated area

Drop In

Daily, as needed

Day Camps

Register for Day Camps
during certain days that
school is closed

Student Lunch

Plate Lunch

Lunch and drink
\$6.15

Student lunch account

Add milk or juice

\$1.15

Ice Cream

Every Wednesday
\$1.50

Lunch Tickets

2 tickets per semester
to eat lunch with your
child

Cafeteria

TK-3rd grade students
eat in their
classrooms. 4th grade
students eat in the
cafeteria.

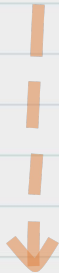
Menu

Menus will be posted
on our website and in
the Elementary
Express.

Specials Classes



PE



Media /
Technology



STEM



Music



Art



TK / K Gradual Entry Days



Tuesday & Friday

All students attend



Wednesday & Thursday

TK & K Students come
one of the two days



				1	2	3
4	5	6	7	8	9	10
11	12	13	14	15	16	17
18	19	20	21	22	23	24
25	26	27	28	29	30	31

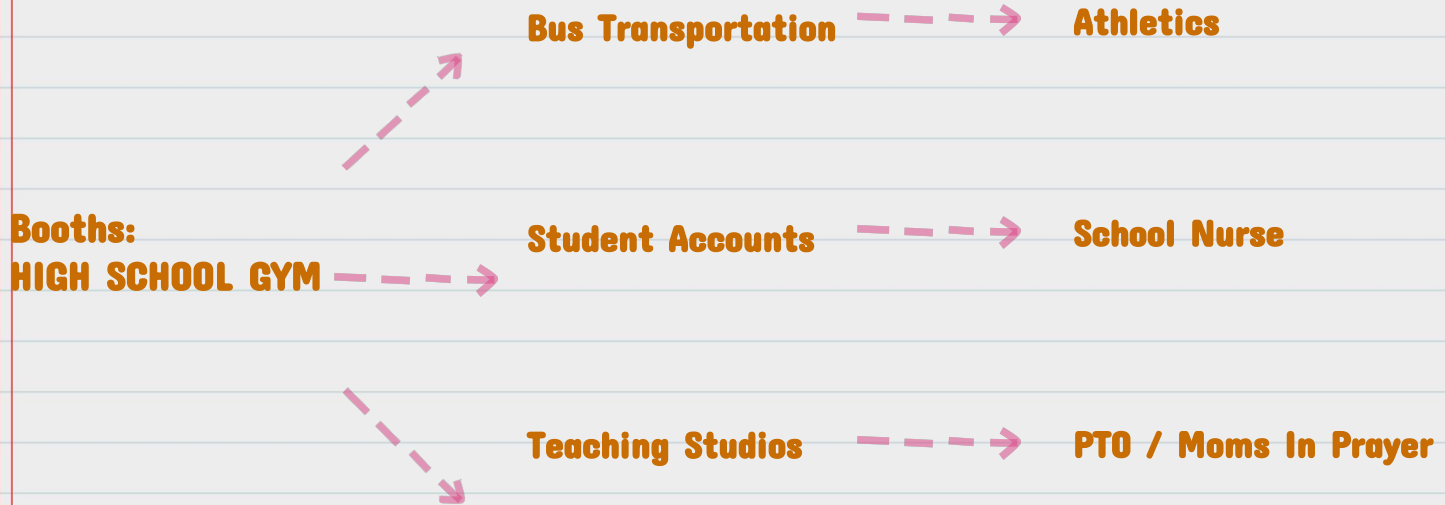
Floating Open House

Floating meet and greet on Thursday, August 8th between 3:30 - 5:30.

- Meet the Teacher
- See the Classroom
- Bring Supplies



Information Fair



...and so much more!



Back to School Guide

<https://www.wcatrojans.org/campus-life/back-to-school-resources/>



**First Day of
School -**

August 13th 

Campus Map

